

# PALLET RACK & WIRE DECK *Systems*



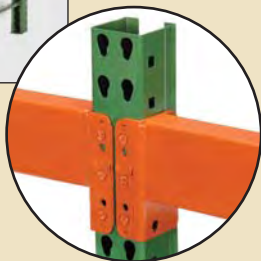
# Full Product Line of Pallet Rack & Wire Deck Systems

Wireway Husky is the only RMI certified company to manufacture rack and wire deck together. Wireway Husky also provides technical and engineering support across an extensive product line that uses numerous punch styles and sizes to meet customer needs. As the originator and leader of the Guaranteed 48-Hour Quick Ship program, our customers have come to expect unparalleled service with quality product as standard.



## INVINCIBLE® RACK

The Wireway Husky line of Invincible pallet rack features brands synonymous with quality in the pallet rack industry for more than 45 years. Upright frames are available in both 3" x 1-5/8" and 3" x 3" posts with heights up to 46 Ft. The teardrop pattern is an industry standard and accepts most teardrop style beams. Beams feature the patented Bowlock® safety clip. Bowlock® cannot be sprung or removed without first removing the load and requires no special tools. Standard colors are green upright frames with orange beams. Call for other color options.



**INVINCIBLE® RACK**  
Most common in the rack industry. Two teardrop punches side by side on 2" centers. Beams adjustable every 2". Compatible with most other manufacturers' teardrop patterns.

3" x 1-5/8"



3" x 1-5/8" Posts available in:  
14 gauge

3" x 3"



3" x 3" Posts available in:  
14 gauge  
13 gauge  
12 gauge  
11 gauge



## LYNX RACK®

Features a Double Slotted Post. 3 inch centers provide quick, easy vertical adjustment of beams. Lynx punch features two angled slots. Beams adjustable every 3". Compatible with similar designs of double slotted rack. Integral safety catch automatically locks into place when beam is properly seated. Standard colors are gray upright frames with yellow beams. Call for other color options.



**LYNX RACK®**  
Features two angled slots on 3" centers. Compatible with similar designs of double slotted rack.

Available 3" x 1-5/8" and 3" x 3"



3" x 1-5/8" Posts available in:  
14 gauge



3" x 3" Posts available in:  
14 gauge  
13 gauge  
12 gauge  
11 gauge } Subject to order quantity

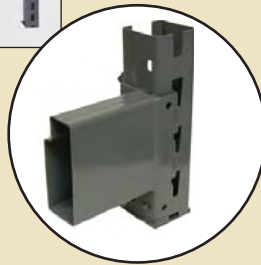


### RELIABLE® RACK

The Wireway Husky line of Reliable pallet rack features brands synonymous with quality in the pallet rack industry for more than 45 years. Upright frames are available in 3" x 3" posts with heights up to 46 Ft. The keystone pattern is an industry standard and accepts most keystone style beams. Standard colors are gray upright frames with gray beams. Call for other color options.

### RELIABLE® RACK

Features a single keystone hole in the center of the upright face on a 3" centerline. Beams adjustable every 3". Beams from both sides share the same hole. Compatible with similar designs of keystone rack.



3" x 3"



3" x 3" Posts available in:

- 14 gauge
  - 13 gauge
  - 12 gauge
  - 11 gauge
- } Subject to order quantity

## Systems From Wireway Husky

From small to large, Wireway Husky is ready and experienced to provide design assistance and manufacture for all your rack system needs. From catwalks to rack supported mezzanines to full pick modules, we have the products and capabilities to successfully construct your project. Services include assistance with structural design, application efficiency, seismic compliance and permitting.



Custom Colors Available on All Products

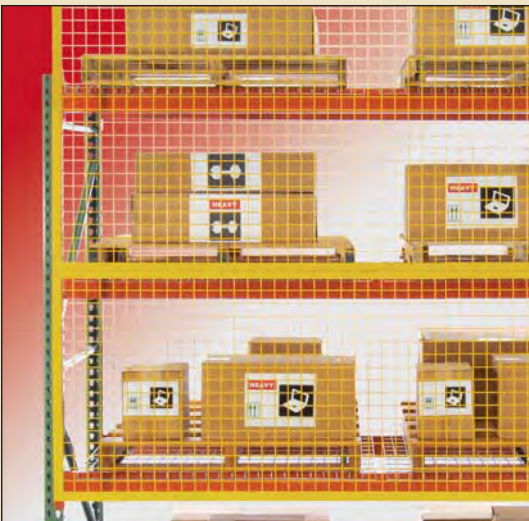




## WIRE DECK



Wireway Husky is the only pallet rack manufacturer to produce its own wire deck. This means you get a wire deck engineered to fit right and meet the performance demands of professional material handlers. Wireway Husky's wire deck is the solution for both new and existing pallet rack systems. Numerous designs are available for a variety of capacity and application needs covering all aspects of both manufacturing and distribution. Installs quickly with no tools and is an excellent choice for facilities with sprinkler systems. Meets all fire and safety regulations.



## RACK GUARD

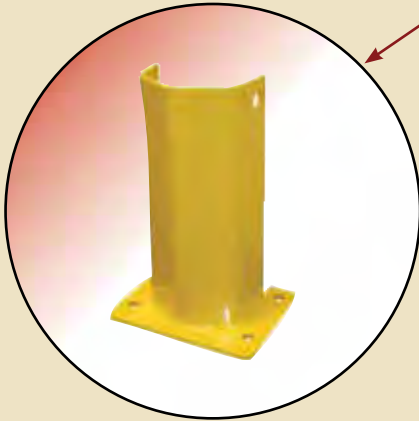
### **Prevent Materials from Falling into Aisles!**

Rack Guard is the economical answer to rack safety and the increasing demands of regulatory agencies.

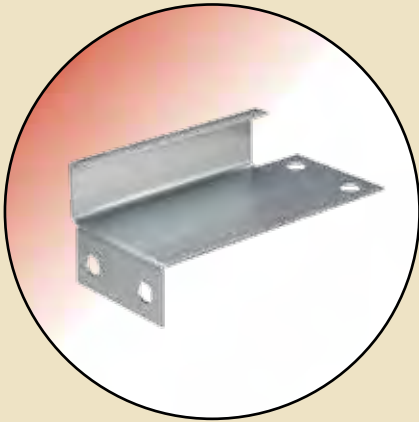
Our panels attach to pallet rack systems using spacer clips. 8-gauge, 2" x 2" square welded steel wire mesh welded to a steel angle frame encloses the rack while still providing inventory visibility. Yellow Finish.

# Accessories

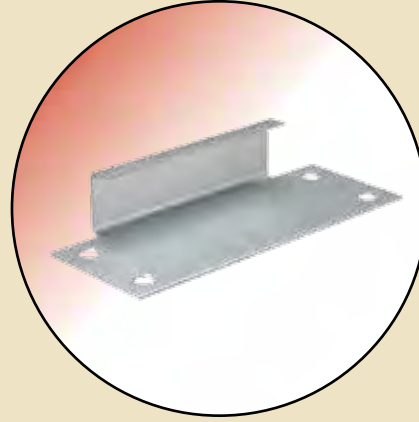
## Floor Mount or Bolt-On



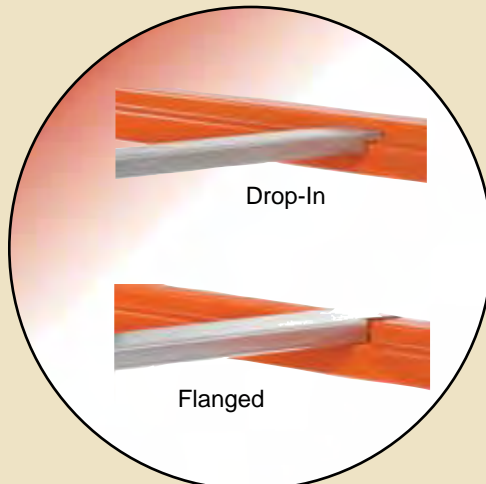
**Post Protectors**  
Protects base of upright frames from lift trucks to minimize



**Wall Ties**  
Secures upright frames to walls for added strength and to help prevent overturning.



**Row Spacers**  
Ties rows of rack together for proper alignment and added strength.



**Crossbars**  
Spans gap between beams to help prevent pallets from falling through.



**Fork Entry Bars**



**Drum Cradle**

